



## Floor-Mounted Tub Spouts/Fillers

# Floor-Mounted NEW Tub Spouts/Fillers

## Create a Contemporary Oasis

Instantly transform a bathroom into a contemporary oasis of style and modern aesthetics. Inspired by the growing trend toward free-standing bathtubs, GROHE introduces floor-mounted tub spouts/fillers that are seamlessly coordinated with the contemporary designs of its most popular lines – Veris™, GROHE Allure, and Atrio®. Floor-mounted tub spouts bring the water well above the tub for a beautifully-controlled cascade of water. Floor-mounted tub fillers with hand showers combine volume/temperature control with hand-held bathing functionality in one sleek unit.

All floor-mounted tub spouts and tub fillers offer the same precision engineering found throughout GROHE's bathroom products.

### Performance Features:



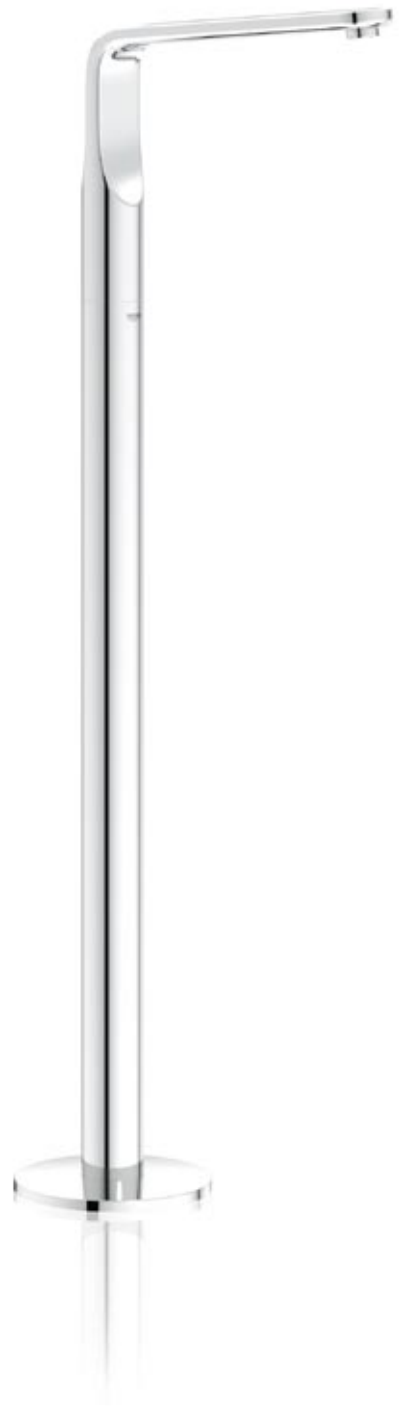
#### GROHE StarLight®

GROHE StarLight® Technology – for a deep, lustrous long lasting chrome finish



#### GROHE SilkMove®

The smooth, precise action of GROHE SilkMove® ceramic cartridge technology for lifelong, effortless water control (tub fillers only)





# Floor-Mounted Tub Spouts



---

**13 245 000**  
Veris™  
floorstanding tub spout <sup>1</sup>  
**GROHE StarLight® chrome**  
Mixing valve sold separately



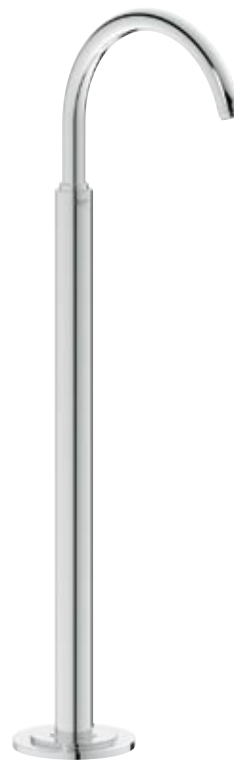
---

**13 218 000**  
GROHE Allure  
floorstanding tub spout <sup>1</sup>  
**GROHE StarLight® chrome**  
Mixing valve sold separately



---

**13 228 001**  
Atrio® 7°  
floorstanding tub spout <sup>1</sup>  
**GROHE StarLight® chrome**  
Mixing valve sold separately



---

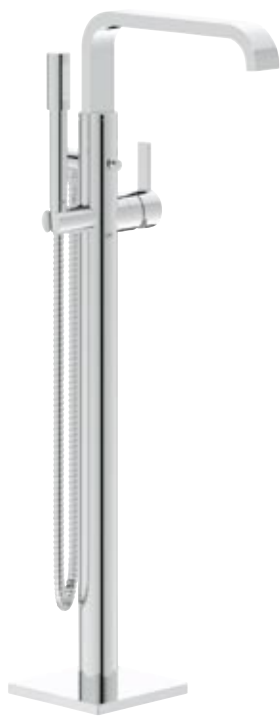
**13 216 001**  
Atrio®  
floorstanding tub spout <sup>1</sup>  
**GROHE StarLight® chrome**  
Mixing valve sold separately

# Floor-Mounted Tub Fillers

(includes integrated mixing valve)



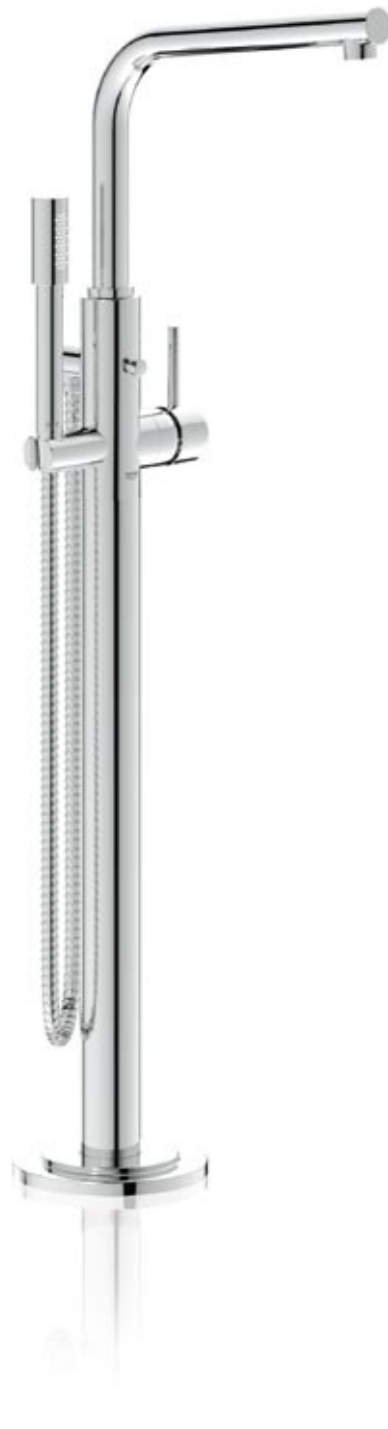
**32 225 000**  
Veris™  
floorstanding tub filler<sup>2\*</sup>  
with personal hand shower  
**GROHE StarLight® chrome**



**32 755 000**  
GROHE Allure  
floorstanding tub filler<sup>2\*</sup>  
with personal hand shower  
**GROHE StarLight® chrome**



**32 227 001**  
Atrio® 7°  
floorstanding tub filler<sup>2\*</sup>  
with personal hand shower  
**GROHE StarLight® chrome**



<sup>1</sup> Requires rough-in set 29 038 sold separately.

<sup>2</sup> Requires rough-in set 45 998 sold separately.

\* To be installed in accordance with local plumbing codes.



GROHE America, Inc.  
Tel. 1.800.44.GROHE  
info@grohe.com  
www.groheamerica.com

GROHE Canada, Inc.  
Tel. 1.888.64.GROHE  
info@grohe.ca  
www.grohe.ca

